

# *iHeat*

## *Central Heating System*

**Rinnai**



iHeat Central Heating System in the roof cavity

*Warm every room in  
your home plus enjoy  
endless hot water*



# Heat all rooms in your home fast\*

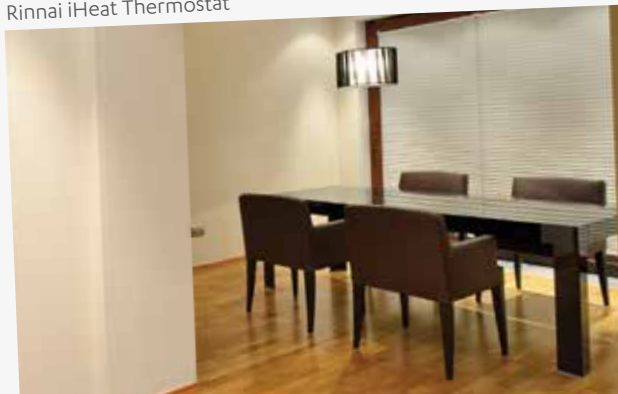
The Rinnai iHeat is a ducted home heating system that circulates air within your home and heats it using hot water from the Rinnai Infinity continuous flow water heater.

## Key benefits and features:

- Whole home heating: even temperature across the entire home
- Comfort all year around: no more electric blankets, hot water bottles, winter duvets or slippers
- Dry windows: reduces the mould and mildew on windowsills
- Unit out of sight: no bulky heating appliances in living spaces, giving you space for the furniture you actually want in your room
- Cost saving: if you already have a Rinnai Infinity then you already own the engine to drive the iHeat
- Closed loop hydronic system: water used by the iHeat is returned to the Rinnai Infinity for reheating, not wasted
- Energy efficiency: approximately the same efficiency as the Rinnai Infinity. Over 80% depending on the model and ducting
- Programmable timers: wake up or come home to a thoroughly warm house. Four different time blocks during each of the 7 days – wake, day, evening, sleep
- Air quality: maintains the air quality for a healthy breathing environment. The warm temperature reduces winter illnesses associated with breathing cold air
- Consistent performance: performs well even in very low outside temperatures
- Versatile location: system can be situated in the ceiling space or under the floor
- No additional gas line required: uses the Rinnai Infinity as the engine for the iHeat
- Powerful heating: 20kW and up to 25kW in some situations. Heats the home quickly

\*Up to 12 rooms.

Rinnai iHeat Thermostat



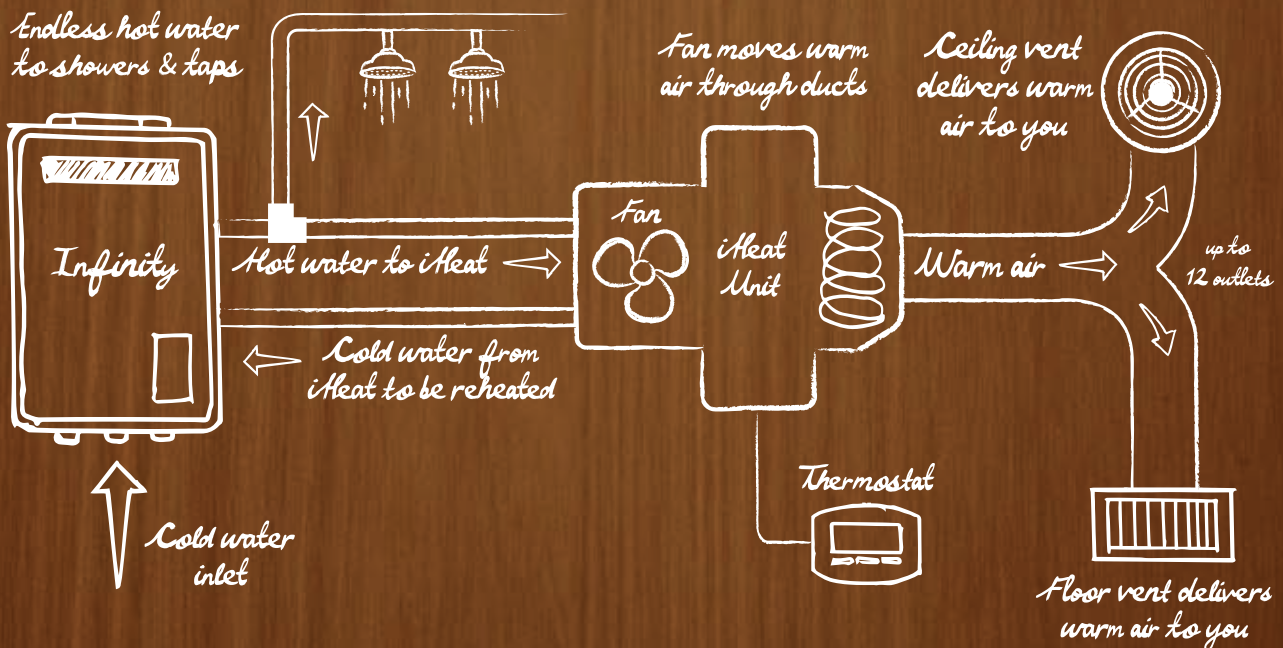




**20** kW  
Heat up  
to 250m<sup>2</sup>

*iHeat unit in  
subfloor installation*

# How does it work?

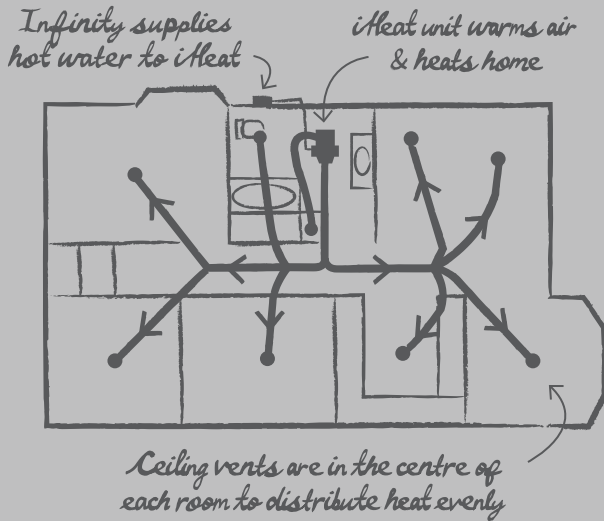


*"The Rinnai iHeat has changed our lives. Over the entire winter my 1 and 3 year old kids had no visits to the doctor compared to the year before when we had 5 visits. The kids sleep easily, even with my son kicking off all his bedding in the middle of the night." – Ben Williamson*

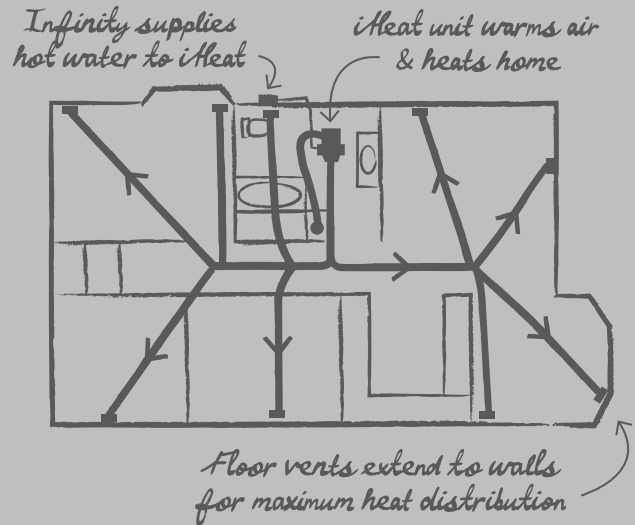


# Ducting Layouts

Plan View - Ceiling Floor Plan



Plan View - Subfloor Plan



## Warranty

The Rinnai iHeat system has been designed and tested for optimum performance with the Rinnai Infinity continuous flow water heater. If another brand of continuous flow water heater is installed with the Rinnai iHeat, this will be deemed as a component supplied by others and will not be covered by this warranty. This includes iHeat system faults caused by a faulty continuous flow water heater other than a Rinnai Infinity.

This 3 year warranty on parts and labour only applies to systems installed by listed installers who have completed the Rinnai iHeat online specifying and installation courses. For listed installers please refer to the Rinnai website: [www.rinnai.co.nz/iheatinstallers.html](http://www.rinnai.co.nz/iheatinstallers.html)

*\*Please refer to our website for full details of Rinnai warranties for individual products.*

**3 YEAR  
WARRANTY**

**ON PARTS  
AND LABOUR\***

## Specifications

**Length** = 1125mm

**Width** = 760mm

**Height** = 610mm + 500mm if suspended mounting is used

**Weight** = 50kg (assembled unit) comes in 3 pieces for easy installation

**Heating area:** Up to 250 m<sup>2</sup> (depending on where you live)

**Number of outlets:** Up to 12 (each outlet provides approx. 1.8 kW)

**Water quality:** Hard or acidic water will need to be treated to use this product.

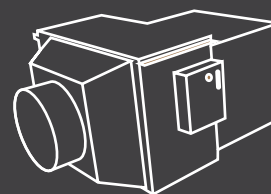
**Recommended number of outlets:** 6 – 12 (150mm)

**Suitable for:**

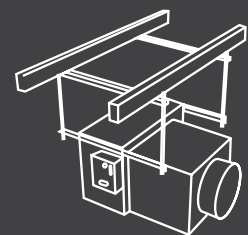
- All new homes in the design phase
- Homes with a gas connection and an existing Rinnai Infinity (or planned installation of a continuous flow hot water unit).
- Homes where the iHeat unit can be installed in a ceiling space, or under the floor – subject to the clearances shown below. The unit cannot be positioned outside.

**Please Note:** iHeat is not compatible with Infinity temperature controllers

*iHeat ceiling mounted*



*iHeat subfloor mounted*



**Clearances:**

The iHeat should be positioned so that the LED's are easily visible through the window of the control board. Avoid positions that make access to the iHeat and removing components difficult.

- Above unit: 450 mm minimum
- Sides of unit: 750 mm minimum each
- Front and behind unit: 1 m minimum

